

Activités mentales

Stéphane Mirbel

référence du test : C-02

Vous disposez de **45 secondes** pour répondre aux questions



Question 1



Calculer

$$\frac{1}{2} + \frac{1}{4}$$

Question 1



Calculer

$$\frac{1}{2} + \frac{1}{4}$$

Question 1



Calculer

$$\frac{1}{2} + \frac{1}{4}$$

Question 1



Calculer

$$\frac{1}{2} + \frac{1}{4}$$

Question 1



Calculer

$$\frac{1}{2} + \frac{1}{4}$$

Question 1



Calculer

$$\frac{1}{2} + \frac{1}{4}$$

Question 1



Calculer

$$\frac{1}{2} + \frac{1}{4}$$

Question 1



Calculer

$$\frac{1}{2} + \frac{1}{4}$$

Question 1



Calculer

$$\frac{1}{2} + \frac{1}{4}$$

Question 2



Calculer

$$\frac{1}{3} + \frac{2}{5}$$

Question 2



Calculer

$$\frac{1}{3} + \frac{2}{5}$$

Question 2



Calculer

$$\frac{1}{3} + \frac{2}{5}$$

Question 2



Calculer

$$\frac{1}{3} + \frac{2}{5}$$

Question 2



Calculer

$$\frac{1}{3} + \frac{2}{5}$$

Question 2



Calculer

$$\frac{1}{3} + \frac{2}{5}$$

Question 2



Calculer

$$\frac{1}{3} + \frac{2}{5}$$

Question 2



Calculer

$$\frac{1}{3} + \frac{2}{5}$$

Question 2



Calculer

$$\frac{1}{3} + \frac{2}{5}$$

Question 3



Calculer

$$\frac{81}{64} \times \frac{24}{9}$$

Question 3



Calculer

$$\frac{81}{64} \times \frac{24}{9}$$

Question 3



Calculer

$$\frac{81}{64} \times \frac{24}{9}$$

Question 3



Calculer

$$\frac{81}{64} \times \frac{24}{9}$$

Question 3



Calculer

$$\frac{81}{64} \times \frac{24}{9}$$

Question 3



Calculer

$$\frac{81}{64} \times \frac{24}{9}$$

Question 3



Calculer

$$\frac{81}{64} \times \frac{24}{9}$$

Question 3



Calculer

$$\frac{81}{64} \times \frac{24}{9}$$

Question 3



Calculer

$$\frac{81}{64} \times \frac{24}{9}$$

Question 4



Calculer

$$\frac{5}{4} + \frac{5}{16} \times \frac{4}{5}$$

Question 4



Calculer

$$\frac{5}{4} + \frac{5}{16} \times \frac{4}{5}$$

Question 4



Calculer

$$\frac{5}{4} + \frac{5}{16} \times \frac{4}{5}$$

Question 4



Calculer

$$\frac{5}{4} + \frac{5}{16} \times \frac{4}{5}$$

Question 4



Calculer

$$\frac{5}{4} + \frac{5}{16} \times \frac{4}{5}$$

Question 4



Calculer

$$\frac{5}{4} + \frac{5}{16} \times \frac{4}{5}$$

Question 4



Calculer

$$\frac{5}{4} + \frac{5}{16} \times \frac{4}{5}$$

Question 4



Calculer

$$\frac{5}{4} + \frac{5}{16} \times \frac{4}{5}$$

Question 4



Calculer

$$\frac{5}{4} + \frac{5}{16} \times \frac{4}{5}$$

Question 5



Comparer

$$\frac{4^2}{3} \text{ et } \left(\frac{4}{3}\right)^2$$

Question 5



Comparer

$$\frac{4^2}{3} \text{ et } \left(\frac{4}{3}\right)^2$$

Question 5



Comparer

$$\frac{4^2}{3} \text{ et } \left(\frac{4}{3}\right)^2$$

Question 5



Comparer

$$\frac{4^2}{3} \text{ et } \left(\frac{4}{3}\right)^2$$

Question 5



Comparer

$$\frac{4^2}{3} \text{ et } \left(\frac{4}{3}\right)^2$$

Question 5



Comparer

$$\frac{4^2}{3} \text{ et } \left(\frac{4}{3}\right)^2$$

Question 5



Comparer

$$\frac{4^2}{3} \text{ et } \left(\frac{4}{3}\right)^2$$

Question 5



Comparer

$$\frac{4^2}{3} \text{ et } \left(\frac{4}{3}\right)^2$$

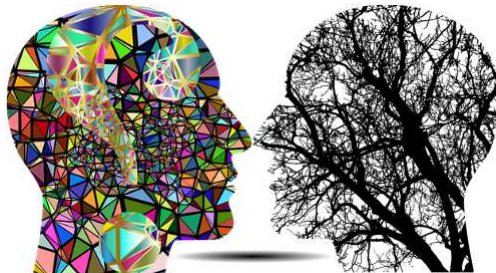
Question 5



Comparer

$$\frac{4^2}{3} \text{ et } \left(\frac{4}{3}\right)^2$$

Correction



Correction question 1

$$\frac{1}{2} + \frac{1}{4} = \frac{2}{4} + \frac{1}{4} = \frac{3}{4} = 0,75$$

ou

$$\frac{1}{2} + \frac{1}{4} = 0,5 + 0,25 = 0,75 = \frac{3}{4}$$

Correction question 2

$$\frac{1}{3} + \frac{2}{5} = \frac{5}{15} + \frac{6}{15} = \frac{11}{15}$$

Correction question 3

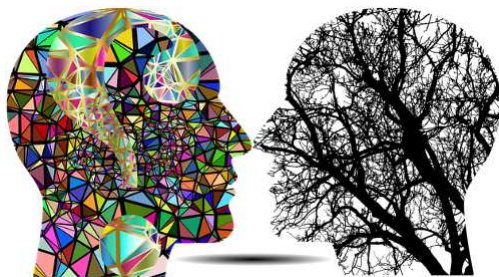
$$\frac{81}{64} \times \frac{24}{9} = \frac{9^2 \times 8 \times 3}{8^2 \times 9} = \frac{9}{8}$$

Correction question 4

$$\frac{5}{4} + \frac{5}{16} \times \frac{4}{5} = \frac{5}{4} + \frac{5 \times 4}{4^2 \times 5} = \frac{5}{4} + \frac{1}{4} = \frac{6}{4} = \frac{3}{2}$$

Correction question 5

$$\frac{4^2}{3} = \frac{16}{3} \text{ et } \left(\frac{4}{3}\right)^2 = \frac{16}{9}$$
$$\frac{16}{9} < \frac{16}{3}$$



Fin